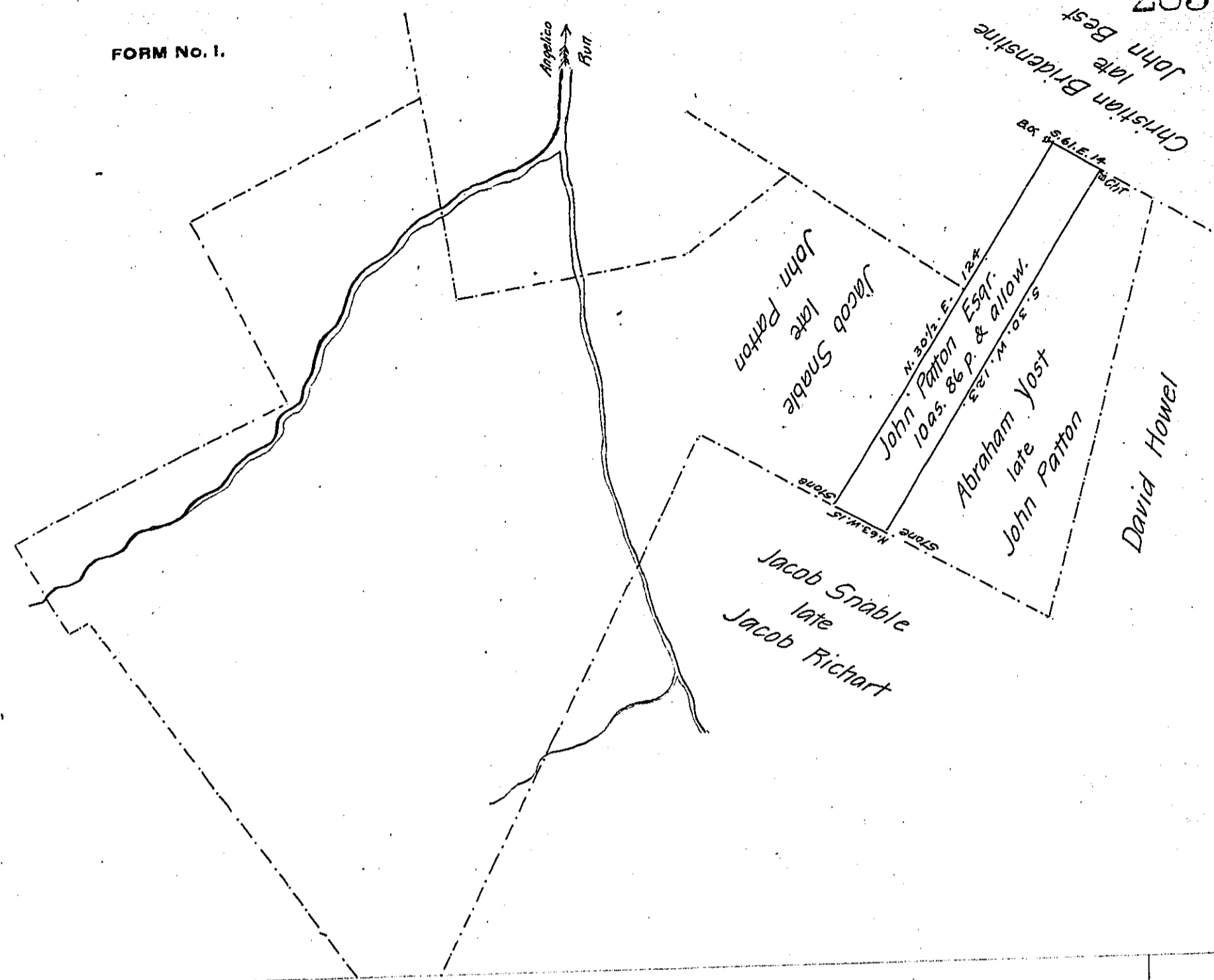


FORM No. 1.



Situate in Cumru Township Berks County
 Containing Ten Acres and eighty six perches & the allowance of six per Cent for roads &c part of a larger Tract of one hundred and eighty six Acres & allow. surveyed to John Patton Esqr. in pursuance of a Warrant dated the 6th. of August A.D. 1765, the above part surveyed the 16th. March 1815 for Daniel Bitting
 pr. John M. Hyneman D.S.

To Richd. T. Leech Esqr. }
 Sur. Genl. Penna }

IN TESTIMONY that the above is a copy of the original remaining on file in the Department of Internal Affairs of Pennsylvania, made conformably to an Act of Assembly approved the 16th day of February, 1833, I have hereunto set my Hand and caused the Seal of said Department to be affixed at Harrisburg, this twenty-sixth day of June 1906

David D. Brown
 Secretary of Internal Affairs.